

moduleo^{ivo}

Design Floors

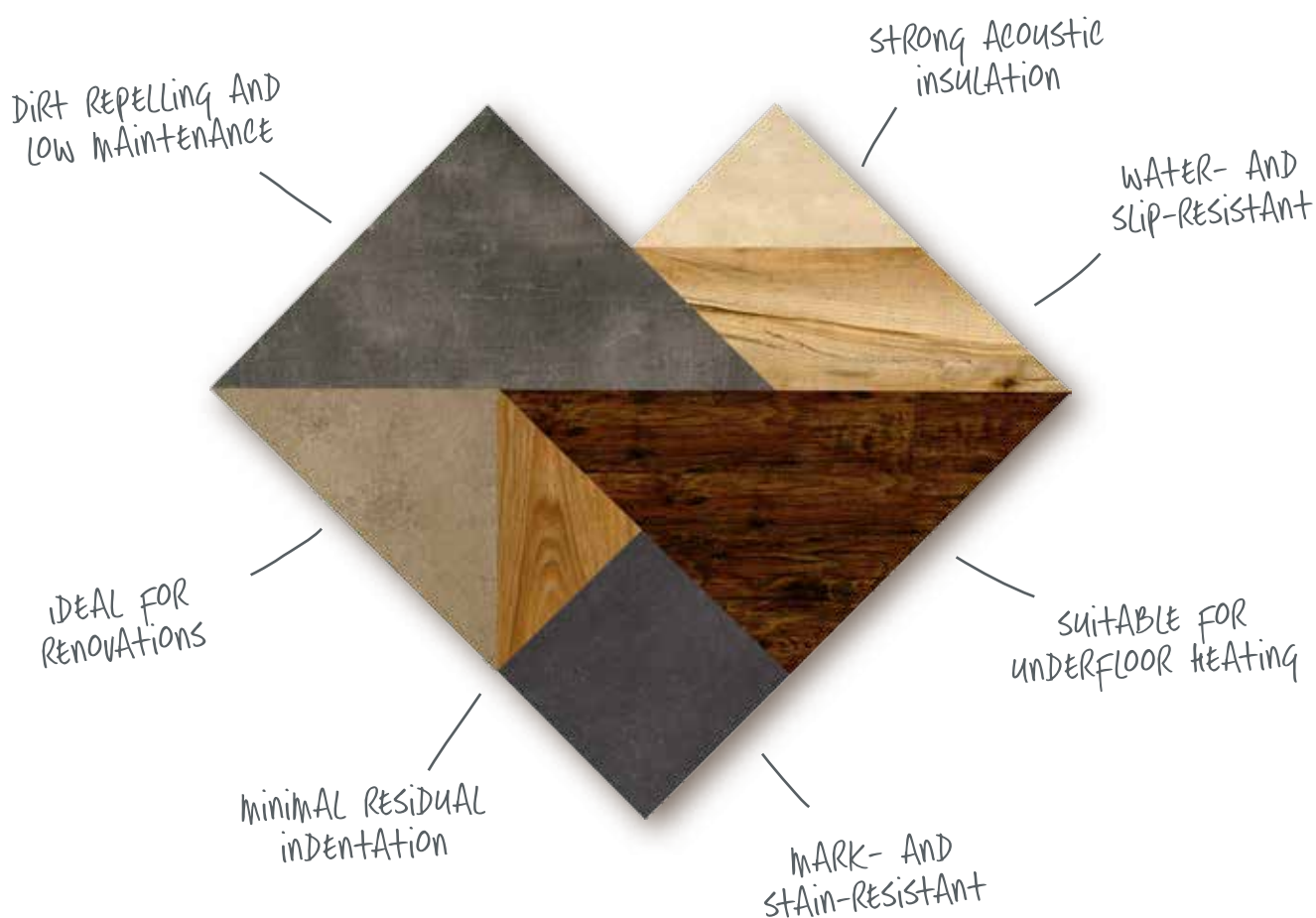
Luxury vinyl floors
for every
room and style



The heart of your home

The heart of your home

Moduleo[®] makes your life easier
& your home more beautiful



A lasting partnership

Come home in a good mood every day. To a safe haven. In the knowledge that your faithful companion will be there. Warm feet. **Ready to make your life better, more attractive.** Yes, we're talking about Moduleo[®]. The dream floor. A reliable partner in your home.

It all falls into place

Moduleo[®] goes deeper than love at first sight. You'll keep on falling – gently – for the many advantages. As well as an attractive appearance, this floor offers an exceptionally hard-wearing top layer. This means **less wear, less maintenance and no fuss**. More time for yourself and your family. With Moduleo[®] it all falls into place.

See also **Practical advantages of a Moduleo[®] floor** on page 4.

Discover Moduleo®

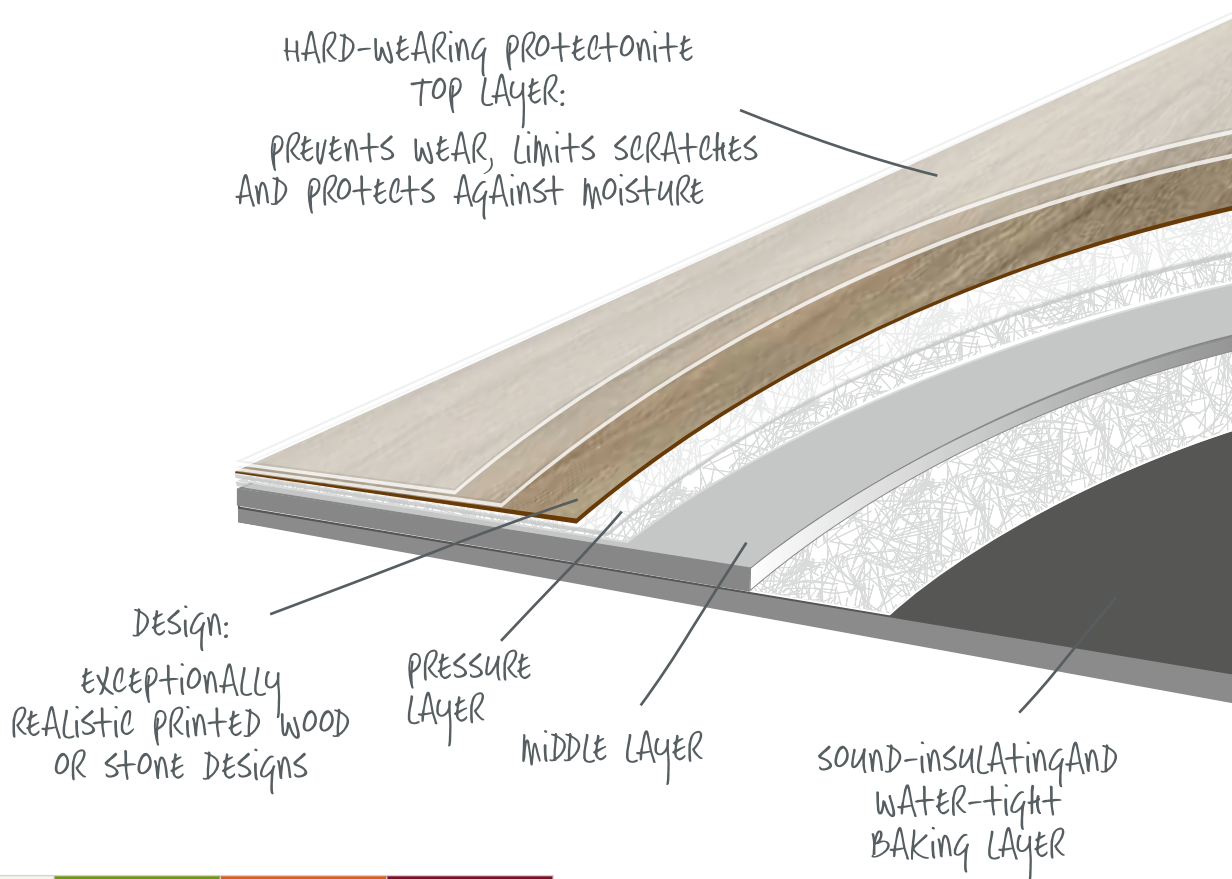


- 2 Why choose Moduleo®?
- 4 Practical advantages of a Moduleo® floor
- 5 What makes Moduleo® so unique?
- 6 Moduleo® Select
- 14 Moduleo® Transform
- 38 Moduleo® Impress
- 46 Overview Planks
- 48 Overview Tiles
- 50 Joint strips
- 53 Laying patterns
- 54 Click & Dryback installation
- 55 Cleaning & maintenance
- 56 Frequently asked questions
- 57 Eco? Logical!



Why choose Moduleo®?

As well as looking gorgeous, Moduleo® also provides a host of practical advantages. Our floors are scratch- and stain-resistant, easy to maintain, sound-dampening and much more. So you don't have to take special care with your floor and you won't spend hours and hours cleaning it. Your visitors – as many as you want – will also love it.



COLLECTION		SELECT	TRANSFORM	IMPRESS
Total thickness	Glued	2.35 mm	2.50 mm	2.50 mm
	Click version	4.50 mm	4.50 mm	4.50 mm
Wear layer		0.40 mm	0.55 mm	0.55 mm
User level		23-32	23-33-42	23-33-42
Warranty		15 year	20 year	20 year



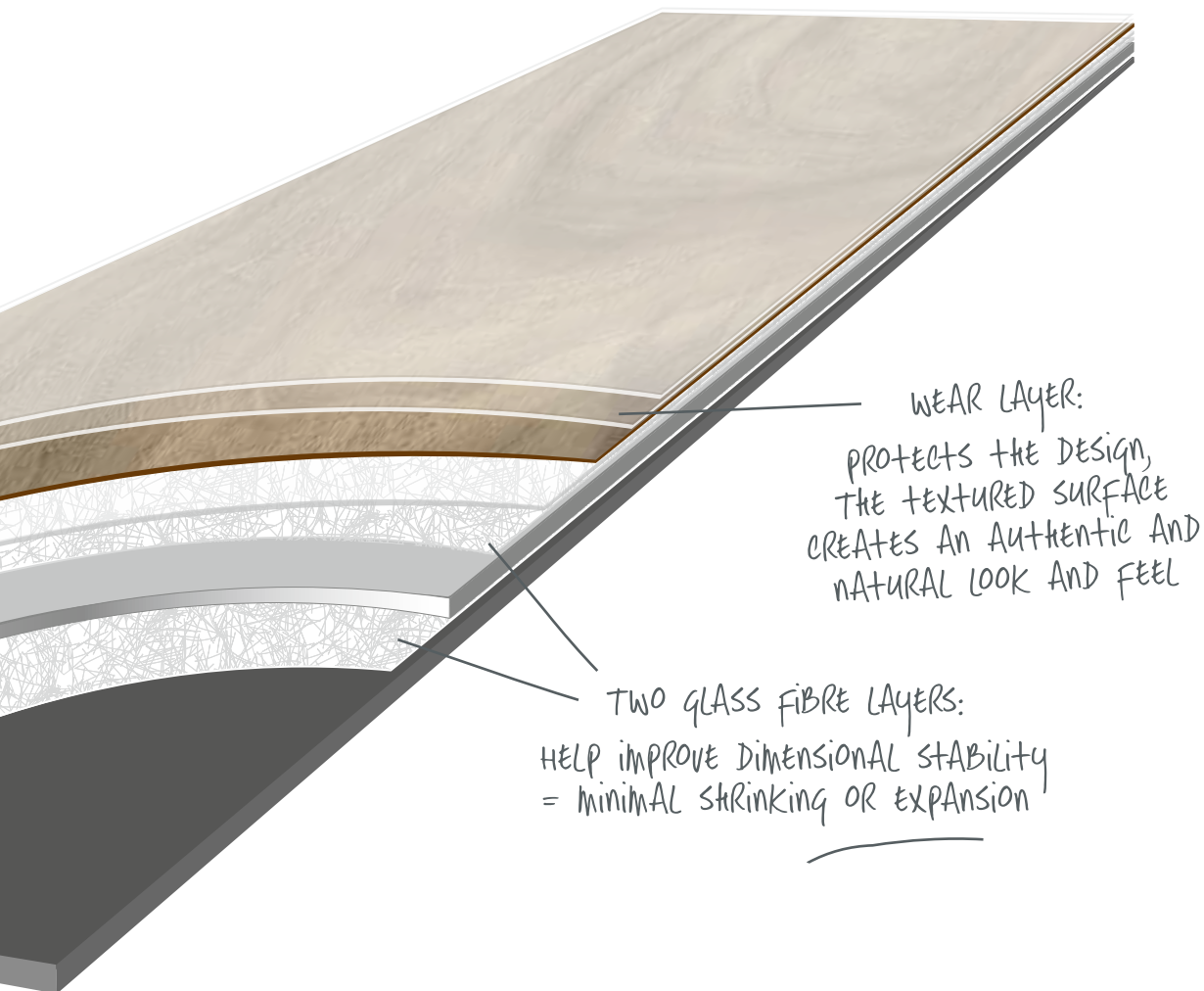
23 – Intensive residential use



33 – Intensive commercial use



42 – Light industrial use



Composition

The unique composition of the Moduleo® planks and tiles provides a whole host of advantages. The layers of glass fibre and vinyl guarantee the floor's dimensional stability, while the wear layer ensures long life with little maintenance.

Protective layer

All our products have a protective coating of Protectonite®, making them even less prone to wear and scratching, and a moisture-proof finish with a unique lifelike texture.



All Moduleo® products are available in a **glued** or **click version**. More details on pages 54.

 **moduleo**
Design Floors

Practical advantages of a Moduleo[®] floor



Water- and slip-resistant

Moisture-resistant, ideal in kitchens or bathrooms when there is a higher risk of slipping. Firm under foot, with a slip resistance value of R10.



Strong acoustic insulation

Moduleo[®] produces perfect acoustics in every space. A sound-damping foundation reduces noise to a comfortable level.



Dirt repelling and low maintenance

The protective layer repels dirt, dust mites and other allergens. Simply sweep, mop or vacuum to keep your floor spotless and hygienic.



Mark- and stain-resistant

The top layer means that this floor can take a knock or two. Marks and stains can be removed in seconds.



Minimal residual indentation

Wear-resistant, proven to withstand the impact of intensive use – including heels – and stains. Ideal for busy spaces.



Ideal for renovations

Moduleo[®] floors are thin and flexible, which means they can often be installed on top of your existing floor, provided it is level and pressure-resistant. That saves a lot of time and effort.



Suitable for underfloor heating

Moduleo[®] feels warm and is perfectly compatible with underfloor heating.



IMPRESS – Scarlet Oak 50274



Moduleo® combines the look, durability and quality of natural materials with the ease of installation, low maintenance and convenience of a vinyl floor.

The best of both worlds.

 **moduleo®**
Design Floors

TRANSFORM – Fazino Maple 28950

What makes Moduleo® so **unique**?



Minimal shrinkage and expansion

Our patented system with double glass fibre layer guarantees the exceptionally high dimensional stability of every Moduleo® design floor.



Warranty

Guaranteed quality, up to 20 year warranty.



Indoor Air Quality

Moduleo® has earned a host of international certificates: ISO 9001, ISO 14001, inside air quality A+, BRE A+.



Natural look & feel

Inspired by nature, the refreshing design and added texture create a natural appearance and touch.



Extra large design

Extra sharp and an extra large design with few repetitions to create a unique, natural look.



Pin-sharp HD print

Highly realistic designs thanks to a unique printing technique, so even the smallest details are in sharp focus.



V groove

A natural look and feel thanks to a seamless V groove on every side.



Protectonite® PU wear layer

Scratch- and wear-resistant thanks to the unique Protectonite® PU wear layer, which protects the floor from scratches and dirt penetration, ensuring the design remains in perfect condition.



MODULEO FLOORS
ARE IDEAL
FOR RENOVATIONS!



Moduleo® Select

Looking to select a unique design for your home?

With Moduleo® Select you no longer need to choose between form and function. This floor takes your room to a new level. Moduleo® Select is perfectly suited to the rough and tumble of family life, while also being easy to clean, saving you time to do something more fun.

The best of many worlds

Moduleo® Select combines the **natural elegance** of stone and wood with the **practical advantages** of wear-resistant vinyl. Functional design in 32 stylish patterns. Select makes your life easier – except when it comes to choosing! The heard-wearing Protectonite® PU layer provides **protection against moisture** and flaking. Ideal for bathrooms and kitchens.

Get a lot of people coming to take a peek around your new home? The more the merrier! Moduleo® Select is **wear-resistant**, so even a big crowd is no problem. And it's easy and quick to clean. If you do have a problem, there's no need to fret: your floor comes with a **15-year warranty**.

Timeless beauty

Moduleo® Select presents designs of timeless beauty, inspired by the riches of nature. Floors that function effectively in any room or environment. Trendy and classic designs in a gorgeous pallet – you'll always find something you love.

SELECT IN BRIEF

USAGE: EVERY ROOM OF THE HOUSE, INCLUDING BATHROOM AND KITCHEN

32
WOOD & TILE
DESIGNS

15
YEAR
GUARANTEE



DRY
BACK

PLANK: 196 x 1320mm
TILE: 329 x 659mm
THICKNESS: 2.35mm



CLICK

PLANK: 191 x 1316mm
TILE: 324 x 655mm
THICKNESS: 4.50mm

Country Oak



24958

24130

24277

24842

24892

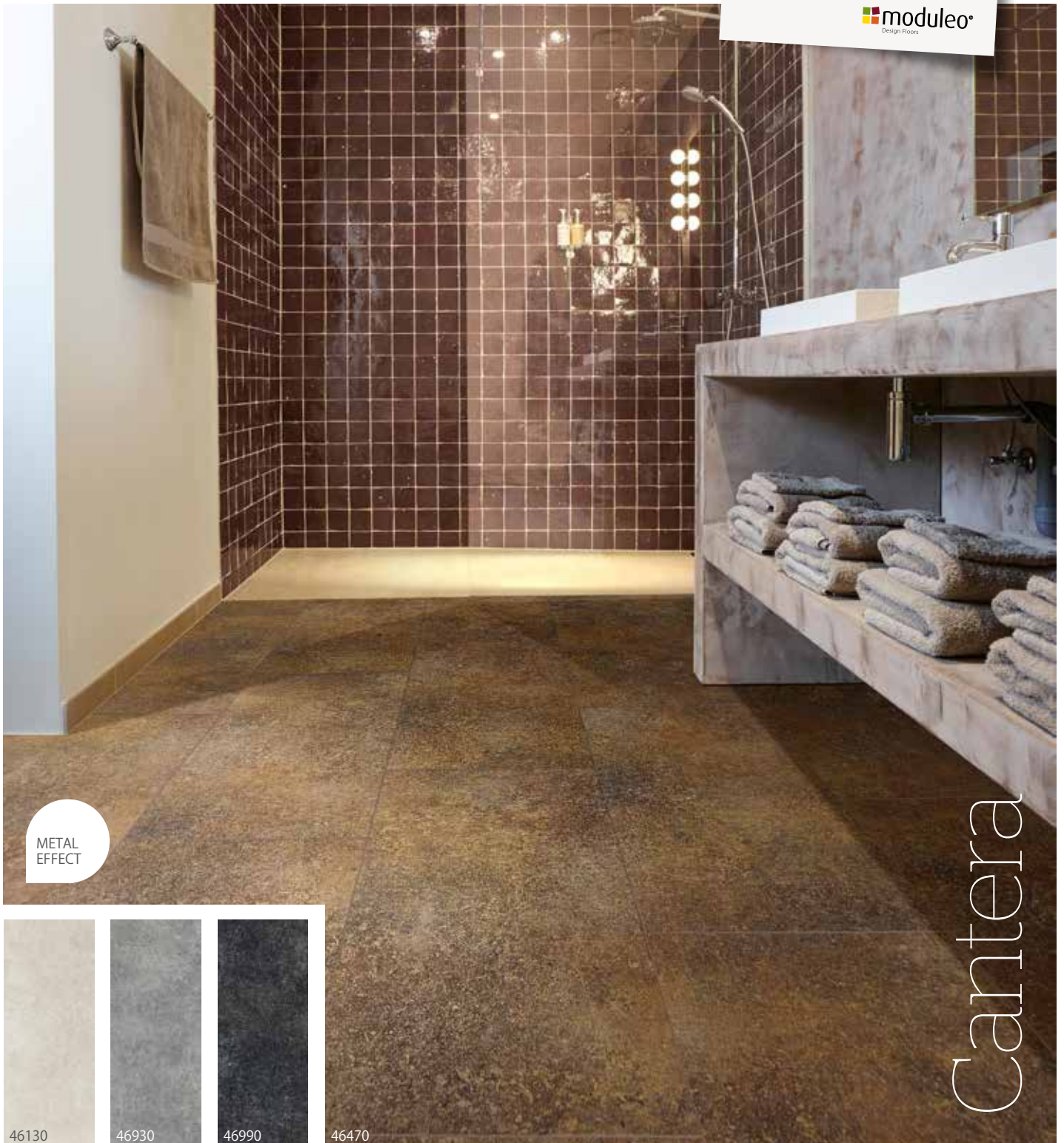
24918

Lay your planks in
the direction of
the light,
to show off the wood
structure.



All planks
and tiles have
a **V groove**
on every side to help
ensure the floor looks
natural.

 **moduleo**
Design Floors



Cantera

METAL
EFFECT



46130



46930



46990



46470

Maritime Pine



24241

24111

24854

24943



Moduleo® produces perfect acoustics in every space. A **sound-damping foundation** reduces noise to a comfortable level.

 **moduleo®**
Design Floors



Jetstone



"URBAN ENERGY":
using RAW MATERIALS
in An INDOOR
ENVIRONMENT.

MORE INSPIRATION AT
WWW.MODULEO.COM



Classic Oak

24932

24125

24228

24837

24844

24864

24877

24980

Elegant oak with
light washed effect,
producing a timeless,
elegant look.

Midland Oak



22110



22240



22231



22821



22929

22863



Moduleo® Transform

Ready to transform your interior?

Could you choose between quality, design and convenience? Thankfully, you don't have to. The Moduleo® Transform luxury vinyl floors offer added value at every level: impact-resistant, very low maintenance and gorgeous too.

The smart choice

Strong performances and technical specifications. Moduleo® Transform is more than the sum of design and quality. The robust **0.55mm wear-layer** and the Protectonite PU coating ensure that this easy-to-clean, hard-wearing floor can grace any room. Moduleo® Transform is moisture-resistant and has a slip resistance value of R10.

Added value for your interior

Choose from 60 gorgeous designs with luxurious look and feel: from contemporary stone effects to playful colours and the classic charm of wood. You can't go wrong, whatever you choose. With Moduleo® Transform, you are guaranteed exceptional quality and timeless beauty that match your inspirations and interior.

TRANSFORM IN BRIEF

USAGE: EVERY ROOM, INCLUDING BATHROOM AND KITCHEN, ALSO FOR COMMERCIAL USE

63

WOOD & TILE DESIGNS

20

YEAR

GUARANTEE

DRY BACK

PLANK: 196 x 1320mm
XL PLANK: 246 x 1498mm
TILE: 329 x 659mm
TILE: 493 x 493mm
THICKNESS: 2.50mm

CLICK

PLANK: 191 x 1316mm
XL PLANK: 241 x 1494mm
TILE: 324 x 655mm
THICKNESS: 4.50mm



Persian Walnut

Natural warm brown walnut look with striking linear grain and shading.

20843

20444



A CLASSIC OAK IS EQUALLY
WELL SUITED TO
TRADITIONAL OR MODERN
INTERIORS.
AN ALL-ROUNDER. ↓



Blackjack Oak



22215



22220



22246



22862



22937



22229

Country Oak

24432



24456



The  of your home

←
THIS REFRESHING
HERRINGBONE PATTERN
SETS A BOLD FOUNDATION
FOR ANY ROOM.

Classic Oak



24235

24234

24438

24850



Extra large
design to
**limit repeat
pattern.**

 **moduleo**
Design Floors



Eden Walnut

more inspiration At
www.moduleo.com

© Mega Knit - Hay



Latin Pine

24142

24242

24852

24580

24874

24868

The luxurious look and feel of wengé, without the price tag of this expensive wood.



28160

Ethnic Wenge

Cotton Wood

20839



The  of your home



Also available:
impressive
150cm XL
planks!

 **moduleo**
Design Floors

LARGE PLANKS
MAKE A SMALL ROOM
LOOK BIGGER.
←

A DARK FLOOR
CREATES A WARM,
COSY FEEL.



Fazino Maple 28950



METAL
EFFECT

A breath-taking
work of art in
brushed maple with
gleaming metal.

28950

28920

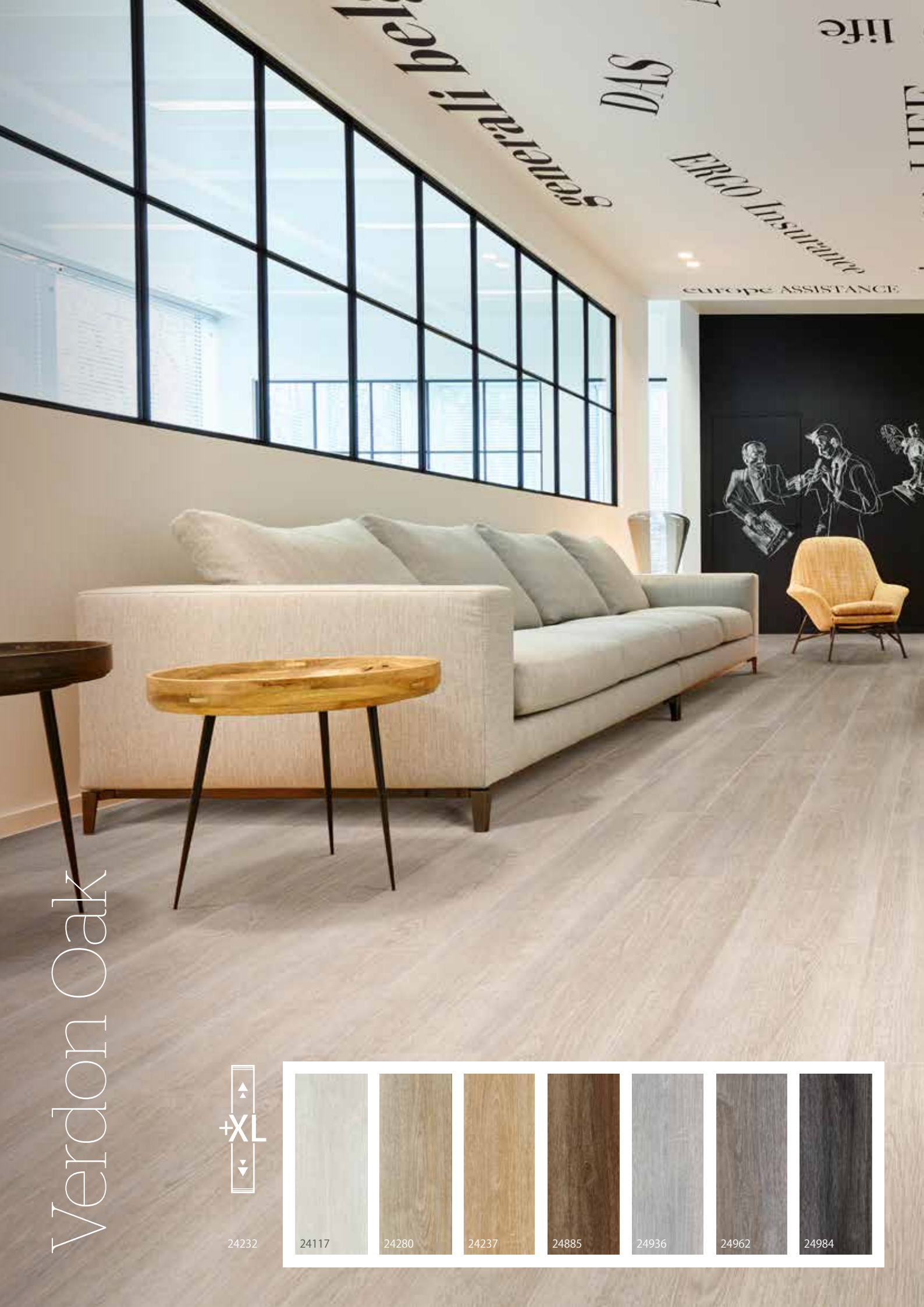
28580



Montreal Oak

24825

24570



Verdon Oak



24232



24117

24280

24237

24885

24936

24962

24984



The  of your home



Natural look & feel

Inspired by nature, the refreshing design and added texture create a natural appearance and touch.

 **moduleo**
Design Floors

Concrete



Also available as
493mm x 493mm
in DRYBACK.

moduleo
Design Floors

METAL
EFFECT

**The industrial
concrete look always
looks good in any
interior.**

40945



40286



40876



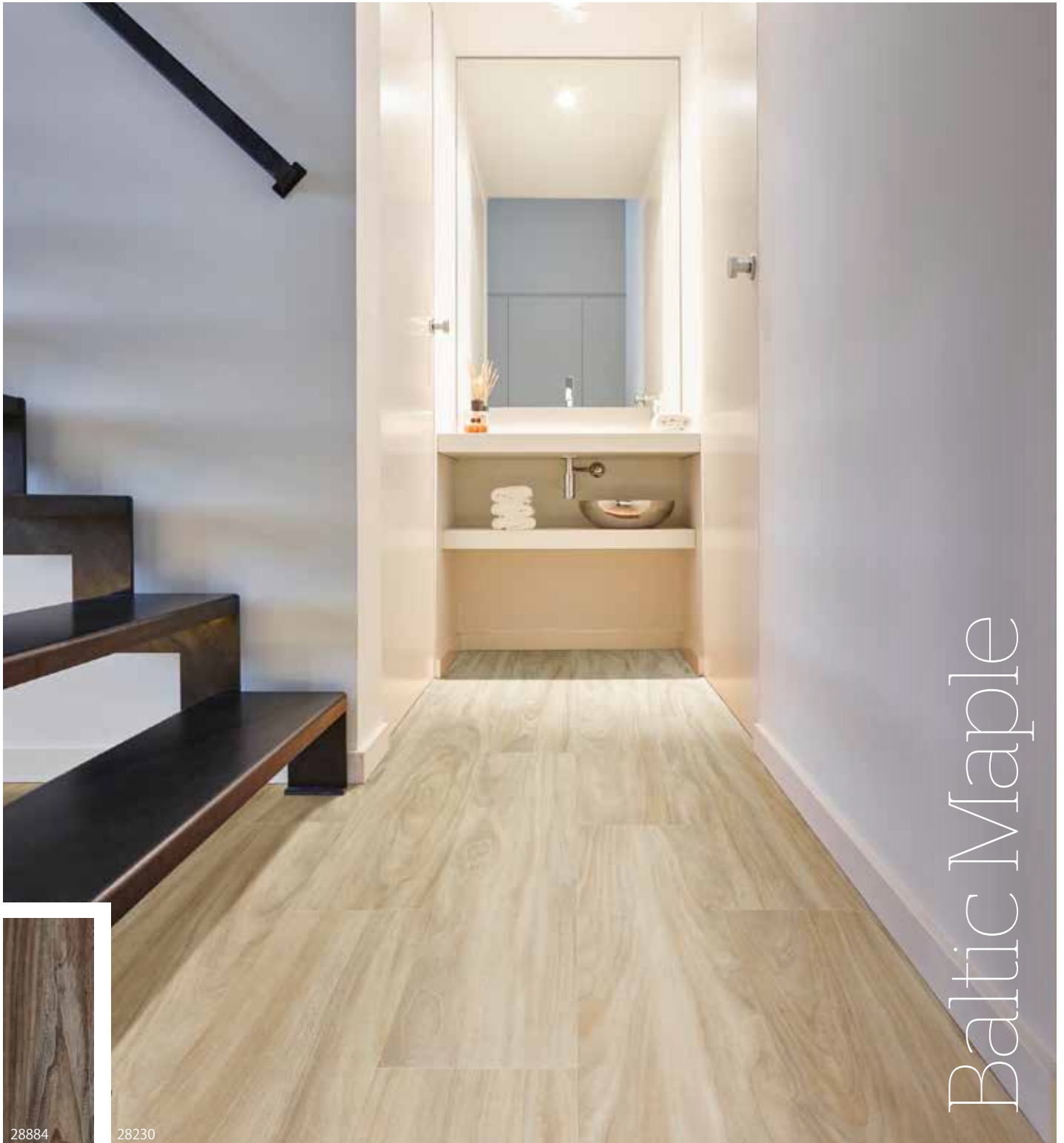
40986



© Arne Jacobsen

"soft touch":
enjoy A timeless
SCANDINAVIAN LOOK.

MORE inspiration AT
WWW.MODULEO.COM



Baltic Maple



28884

28230

Steelrock

The look of a
weathered steel plate,
creating a modern
interior with an
industrial feel.

46940

METAL
EFFECT

46234

46832



"CLOSE TO NATURE":
WELCOME TO YOUR
NATURAL HABITAT:
AN EXCEPTIONAL MIX
OF WOOD & STONE.



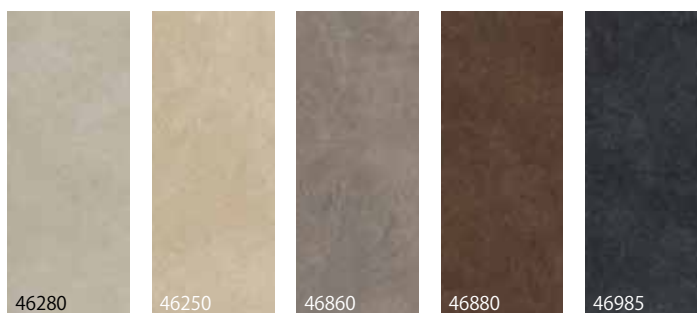
**Abstract design
with glittering metal
tints, creating a gleaming
contemporary interior.**



Azuriet

GLITTER
EFFECT

46148 + Joint Strip 3215 Beige



46280

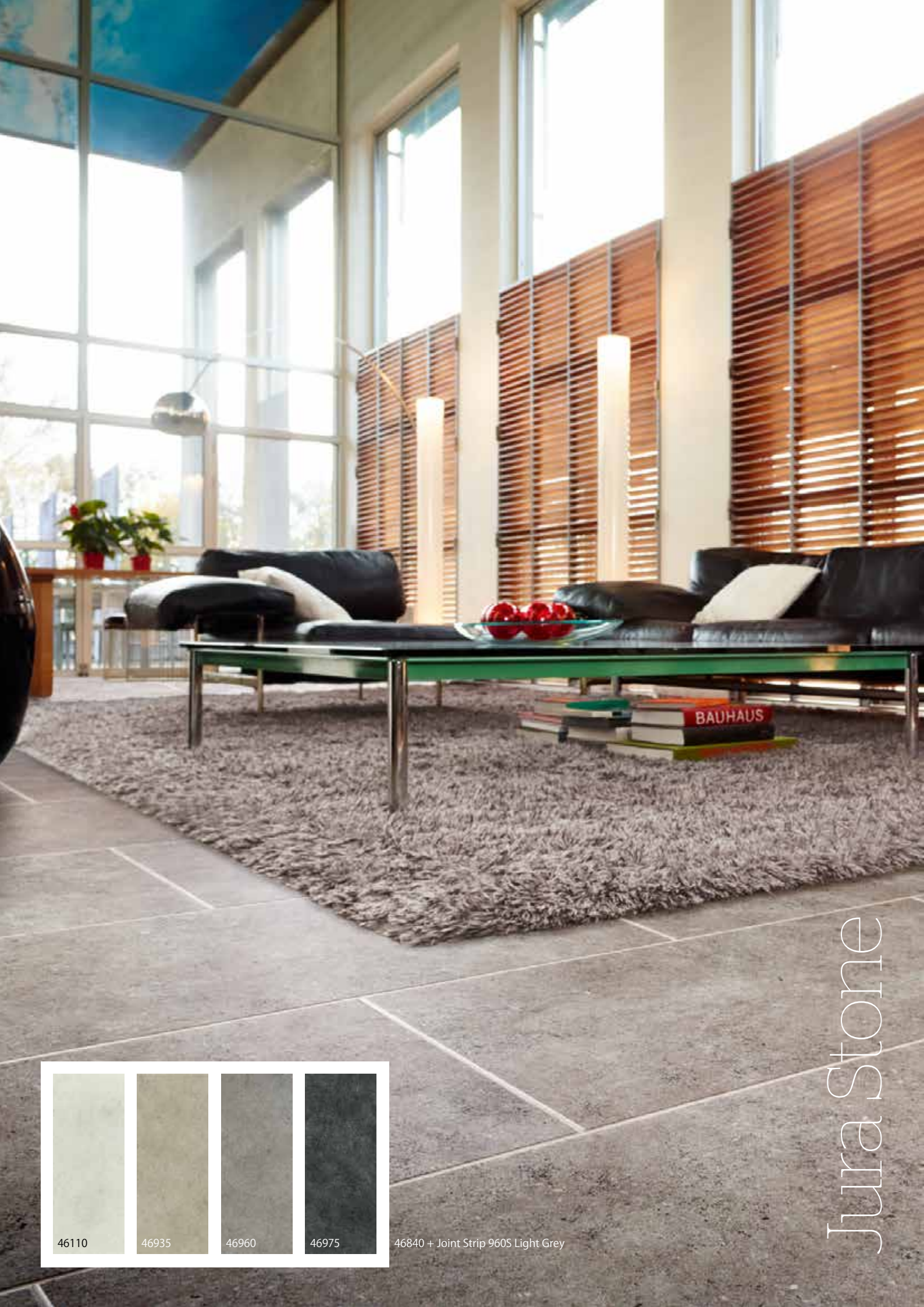
46250

46860

46880

46985





46840 + Joint Strip 960S Light Grey

Jura Stone

Zeera Slate



36952 + Joint Strip 390S Grey



36850



36990







Moduleo® Impress Want to be impressed?

The name of our latest collection immediately makes clear what the collection represents: a truly unique impression. The 'embossed in register' procedure contributes to the true-to-nature look and feel of all the Moduleo® Impress floors.

Embossed in register

The Impress collection brings to life the smallest details of real wood, demonstrating the true beauty of nature. Impress features an incredible registered emboss texture allowing you to see and actually feel the depth of the grooves, lines and knots of the wood.

Inspiring floors

The result is 22 stylish, true-to-nature designs that cover all contemporary interior design trends. Floors with an unrivalled realistic look. Inspiring floors. Floors that impress.

IMPRESS IN BRIEF

USAGE: EVERY ROOM, INCLUDING BATHROOM AND KITCHEN, ALSO FOR COMMERCIAL USE

22
WOOD
DESIGNS



PLANK: 196 x 1320mm
THICKNESS: 2.50mm



PLANK: 191 x 1316mm
THICKNESS: 4.50mm

Country Oak



54880

54925

54225

54852

54991



"CLOSE TO NATURE":
WELL-BALANCED
TEXTURES THAT
RECREATE THE ESSENCE
OF NATURE.

**This floor is perfectly
suited to a modern,
minimalistic interior.
The typical saw cuts
enhance the artisanal
effect.**



Castle Oak



55152



55236



55850



55960



55935

Eastern Hickory



HIGH
GLOSS
EFFECT



57885

57422

The  of your home



Moisture-resistant, ideal in kitchens or bathrooms when there is a higher risk of slipping.
Firm under foot, with a slip resistance value of R10.

 **moduleo**
Design Floors



check out
www.moduleo.com
for more
inspiring interiors.

Nostalgic homage to the
artisanal white leading
technique to create a
stylish patinated effect.

Scarlet Oak



50230

50274

50915

50860

50985

METAL
EFFECT



Mountain Oak



56870

Overview **Planks**

														
TRANSFORM Verdon Oak 24117 - Pag. 28	SELECT Midland Oak 22110 - Pag. 13	SELECT Maritime Pine 24111 - Pag. 11	SELECT Country Oak 24130 - Pag. 8	SELECT Classic Oak 24125 - Pag. 12	TRANSFORM Latin Pine 24142 - Pag. 22	TRANSFORM Latin Pine 24242 - Pag. 22	SELECT Classic Oak 24228 - Pag. 12	TRANSFORM Baltic Maple 28230 - Pag. 31	IMPRESS Castle Oak 55152 - Pag. 41	TRANSFORM Blackjack Oak 22215 - Pag. 17	TRANSFORM Classic Oak 24234 - Pag. 20	TRANSFORM Cotton Wood 20119 - Pag. 24	TRANSFORM Blackjack Oak 22220 - Pag. 17	IMPRESS Country Oak 54925 - Pag. 40
														
TRANSFORM Ethnic Wenge 28160 - Pag. 23	SELECT Maritime Pine 24241 - Pag. 10	TRANSFORM Blackjack Oak 22246 - Pag. 17	TRANSFORM Verdon Oak 24232 - Pag. 28	IMPRESS Mountain Oak 56215 - Pag. 45	SELECT Midland Oak 22240 - Pag. 13	SELECT Midland Oak 22231 - Pag. 13	TRANSFORM Verdon Oak 24280 - Pag. 28	TRANSFORM Blackjack Oak 22229 - Pag. 17	IMPRESS Scarlet Oak 50230 - Pag. 44	IMPRESS Mountain Oak 56230 - Pag. 45	TRANSFORM Verdon Oak 24237 - Pag. 28	TRANSFORM Cotton Wood 20219 - Pag. 24	TRANSFORM Cotton Wood 20639 - Pag. 24	SELECT Country Oak 24842 - Pag. 8
														
TRANSFORM Verdon Oak 24936 - Pag. 28	SELECT Classic Oak 24932 - Pag. 12	SELECT Country Oak 24918 - Pag. 8	TRANSFORM Blackjack Oak 22937 - Pag. 17	SELECT Country Oak 24958 - Pag. 8	IMPRESS Castle Oak 55935 - Pag. 41	IMPRESS Scarlet Oak 50915 - Pag. 44	TRANSFORM Ethnic Wenge 28282 - Pag. 23	IMPRESS Mountain Oak 56938 - Pag. 45	TRANSFORM Verdon Oak 24962 - Pag. 28	SELECT Maritime Pine 24943 - Pag. 10	SELECT Midland Oak 22929 - Pag. 13	SELECT Country Oak 24277 - Pag. 8	SELECT Classic Oak 24864 - Pag. 12	IMPRESS Country Oak 54852 - Pag. 40

														
IMPRESS Scarlet Oak 50274 - Pag. 44	TRANSFORM Classic Oak 24235 - Pag. 20	IMPRESS Country Oak 54225 - Pag. 40	TRANSFORM Classic Oak 24438 - Pag. 20	TRANSFORM Country Oak 24432 - Pag. 18	TRANSFORM Classic Oak 24850 - Pag. 20	IMPRESS Castle Oak 55236 - Pag. 41	SELECT Classic Oak 24837 - Pag. 12	IMPRESS Mountain Oak 56440 - Pag. 45	TRANSFORM Latin Pine 24874 - Pag. 22	TRANSFORM Fazzino Maple 28580 - Pag. 26	TRANSFORM Montreal Oak 24570 - Pag. 27	TRANSFORM Eden Walnut 28891 - Pag. 21	TRANSFORM Latin Pine 24580 - Pag. 22	TRANSFORM Blackjack Oak 22862 - Pag. 17
														
TRANSFORM Montreal Oak 24805 - Pag. 27	TRANSFORM Persian Walnut 20444 - Pag. 16	SELECT Classic Oak 24844 - Pag. 12	SELECT Midland Oak 22821 - Pag. 13	IMPRESS Eastern Hickory 57422 - Pag. 42	TRANSFORM Country Oak 24456 - Pag. 18	SELECT Midland Oak 22863 - Pag. 13	SELECT Classic Oak 24877 - Pag. 12	IMPRESS Castle Oak 53850 - Pag. 41	SELECT Maritime Pine 24854 - Pag. 10	IMPRESS Eastern Hickory 57885 - Pag. 42	IMPRESS Country Oak 54880 - Pag. 40	TRANSFORM Fazzino Maple 28950 - Pag. 26	SELECT Country Oak 24892 - Pag. 8	TRANSFORM Ethnic Wenge 28890 - Pag. 23
														
TRANSFORM Persian Walnut 20843 - Pag. 16	TRANSFORM Verdon Oak 24885 - Pag. 28	IMPRESS Mountain Oak 56870 - Pag. 45	TRANSFORM Latin Pine 24852 - Pag. 22	TRANSFORM Latin Pine 24868 - Pag. 22	TRANSFORM Baltic Maple 28884 - Pag. 31	IMPRESS Castle Oak 55960 - Pag. 41	IMPRESS Scarlet Oak 50860 - Pag. 44	TRANSFORM Fazzino Maple 28920 - Pag. 26	TRANSFORM Verdon Oak 24984 - Pag. 28	IMPRESS Scarlet Oak 50985 - Pag. 44	SELECT Classic Oak 24980 - Pag. 12	IMPRESS Country Oak 54991 - Pag. 40		

Overview **Tiles**



TRANSFORM Jura Stone 46110 - Pag. 35



TRANSFORM Azuriet 46148 - Pag. 34



SELECT Jetstone 46942 - Pag. 11



SELECT Jetstone 46232 - Pag. 11



SELECT Cantera 46130 - Pag. 9



TRANSFORM Concrete 40945 - Pag. 30



TRANSFORM Azuriet 46280 - Pag. 34



TRANSFORM Jura Stone 46935 - Pag. 35



TRANSFORM Jura Stone 46960 - Pag. 35



TRANSFORM Azuriet 46250 - Pag. 34



TRANSFORM Jura Stone 46840 - Pag. 35



SELECT Cantera 46930 - Pag. 9



TRANSFORM Steelrock 46234 - Pag. 32



TRANSFORM Concrete 40286 - Pag. 30



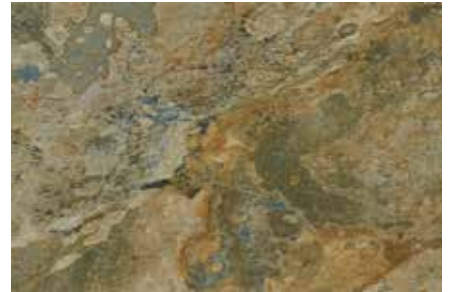
TRANSFORM Steelrock 46940 - Pag. 32



TRANSFORM Azuriet 46860 - Pag. 34



TRANSFORM Steelrock 46832 - Pag. 32



TRANSFORM Zeera Slate 36850 - Pag. 36



TRANSFORM Zeera Slate 36952- Pag. 36



TRANSFORM Azuriet 46880 - Pag. 34



SELECT Cantera 46470 - Pag. 9



SELECT Jetstone 46982 - Pag. 11



TRANSFORM Jura Stone 46975 - Pag. 35



TRANSFORM Azuriet 46985 - Pag. 34



TRANSFORM Concrete 40876- Pag. 30



TRANSFORM Concrete 40986 - Pag. 30



SELECT Cantera 46990- Pag. 9



SELECT Jetstone 46992 - Pag. 11

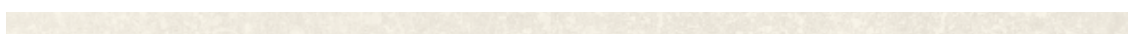


TRANSFORM Zeera Slate 36990 - Pag. 36

Joint **strips** 30 strips / box

Moduleo® joint strips are individually coloured to complement our range of flooring. The strips can be used to imitate the use of a grout finish or add sophistication to wooden execution.

311S White
914mm x 4mm



321S Beige
914mm x 4mm



335S Dark Beige
914mm x 4mm



960S Light Grey
914mm x 4mm



390S Grey
914mm x 4mm



382S Silver
914mm x 4mm



395S Dark Grey
914mm x 4mm



985S Black Glitter
914mm x 4mm



399S Black
914mm x 4mm





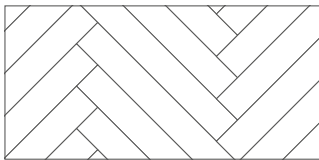
Joint strips



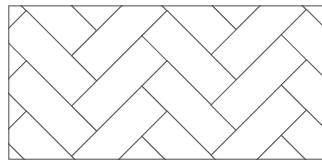
Laying patterns

Laying patterns

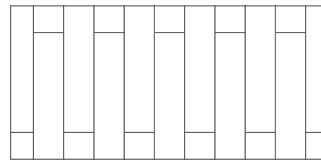
Create distinctive, unique looks for commercial projects by utilising either standard size options or our special patterns. Below you can find some examples.



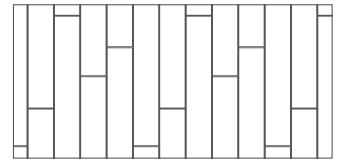
Herringbone
196mm x 1320mm



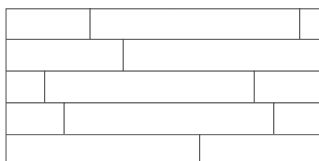
Herringbone (customisation)



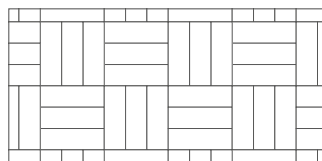
Brick formation
196mm x 1320mm



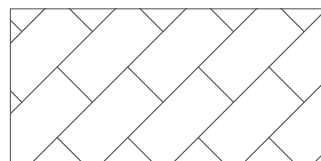
Deck formation
196mm x 1320mm
Joint strip
4mm x 914mm



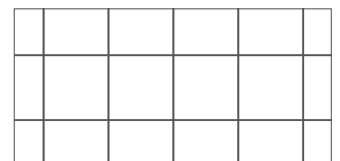
Straight lay
196mm x 1320mm



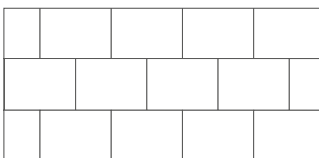
Wood block (customisation)



45° angle
329mm x 659mm



Straight lay
493mm x 493mm



Brick bond
329mm x 659mm
Joint strip
4mm x 914mm

Standard product sizes

TRANSFORM WOODS

246 x 1498 mm* (XL)

241 x 1494 mm* (XL)

196 x 1320 mm

191 x 1316 mm

Dryback

Click

TRANSFORM TILES

191 x 1316 mm

324 x 655 mm

493 x 493 mm*

Click

Dryback

* Only on selected products

Click installation



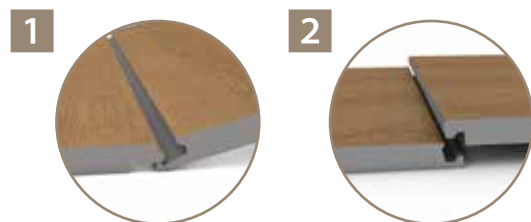
► Clicking



The planks and tiles are installed as floating floors on a sturdy, even surface or underfloor. This makes gluing superfluous.

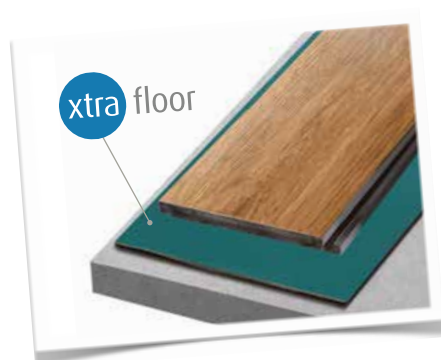
LockXpress

The unique LockXpress [LXP]® system with practical tooth-groove connection ensures easy, convenient installation.



Xtrafloor

We advise the use of Xtrafloor® underfloor as a leveller and to further improve sound-dampening. For more information about Xtrafloor products: www.xtrafloor.com



Dryback installation



► Gluing



This is the traditional installation method. The planks and tiles are glued with a special adhesive to a thoroughly prepared surface or underfloor that is hard, dry and flawless.

See www.moduleo.com for installation instructions.

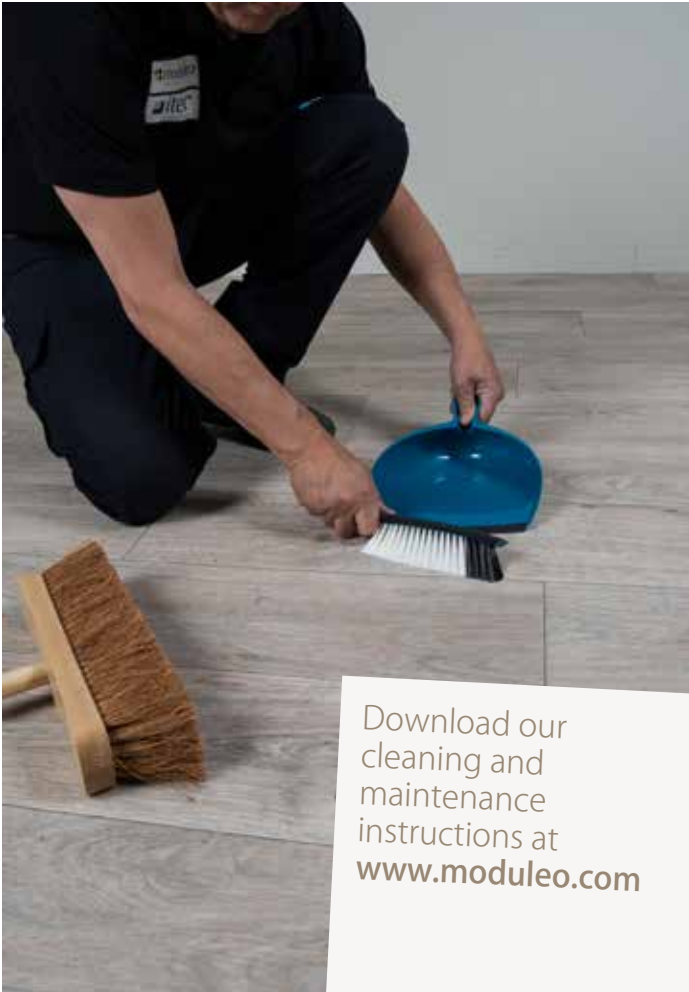
We recommend having your floor installed by your Moduleo® dealer.



Gluing
↓



Cleaning & maintenance



► Dust regularly

Download our
cleaning and
maintenance
instructions at
www.moduleo.com



► Clean up spillages with a slightly moist mop

Clean regularly

Remove everyday dirt with:

- Broom
- Duster
- Vacuum cleaner

Remove stains with:

- Moist cloth
- Absorbent pad (not a scourer)

Mop with:

- Moist micro-fibre mop
- Regular mop (as dry as possible)
- A non-aggressive cleaner like Xtrafloor (www.xtrafloor.com)

Good cleaning and maintenance help preserve the appearance and extend the life of a Moduleo® floor.

Cleaning frequency depends on how intensely the floor is used, how many people walk on it, how dirty it is, what colour and what type it is.

Moduleo® floors are given **extra protection** by a Protectonite® lacquer on top of the resistant wear layer. This lacquer protects against dirt and makes cleaning easier. Thanks to the Protectonite® layer, the floor does not need to be pretreated with a protective agent.

Important

- Always wipe up spillages before they penetrate into the floor and cause permanent discoloration.
- A Moduleo® floor can be slippery when wet.
- When a neutral detergent is required, always follow the supplier's instructions with regard to mixing and how much to use.
- After cleaning, you need to dry the floor within one or two minutes to ensure no cleaning solution and dirt is left on the surface of the floor.

Frequently asked questions

How can I find a Moduleo® dealer close to me?

Find your nearest
Moduleo® dealer at
www.moduleo.com.



» Are Moduleo® floors suitable for bathrooms?

Absolutely. Moduleo® floors are highly moisture-resistant. This makes them exceptionally well suited to moist spaces like bathrooms (but not in wet spaces like saunas and showers). Plus our floors feel warm and soft, a pleasure for bare feet!

» Are Moduleo® floors suitable for kitchens?

Absolutely. Moduleo® has a very hard-wearing top layer and is moisture-resistant. This means that a Moduleo® floor is well-suited to use in kitchens. Plus our floors are very easy to clean.

» Can Moduleo® floors be used with underfloor heating?

They certainly can. Moduleo® floors feel pleasantly warm, because they quickly take on the ambient temperature. But Moduleo® floors can also be installed over underfloor heating, provided this is done professionally. Underfloor cooling is not an issue either.

» Does a Moduleo® floor need a lot of maintenance?

Not at all. Moduleo® floors are low-maintenance and, unlike some other types of flooring, very easy to clean. The Protectonite® top layer makes special treatments and immediate cleaning after installation superfluous. If you do note your floor is getting dirty, you can clean it thoroughly with Xtrafloor®.

Your Moduleo® floor is easy to clean with a regular broom, micro-fibre cloth, vacuum cleaner or moist cloth. Regular cleaning keeps your floor looking beautiful for longer. Always use a non-aggressive cleaning agent.

» Can Moduleo® floors be installed over existing floors?

Yes, Moduleo® floors can be installed over many types of different floors such as concrete and timber hard level floors.

The floors do need to be properly prepared to ensure that they are sound, smooth, level and free from defects.

Please see www.moduleo.com for detailed installation instructions, with an overview of the installation requirements and the preparation required to install a Moduleo® floor.

» Can I install Moduleo® myself?

It is certainly possible to install the click version yourself. Moduleo® is easy to handle and cut. That being said, we advise you to have your Moduleo® floor installed by a Moduleo® dealer. That is your guarantee of professional finishing and you benefit from a full warranty.

IVC Group

Formed in 1997 IVC Group is a world leader in the development and manufacture of vinyl floors. Six production units in Belgium, Luxembourg and the United States, employing 1500 people in total, manufacture some 100 million square metres of vinyl flooring annually.

The IVC Group product portfolio comprises four brands: Leoline® (residential vinyl flooring on rolls),

Flexitec® (residential vinyl flooring on rolls in North America), Itec® (project vinyl flooring on rolls) and Moduleo® (high-end modular vinyl flooring for project and residential use).

In 2015 IVC Group became part of US listed company Mohawk Industries Inc., the global leader in flooring.



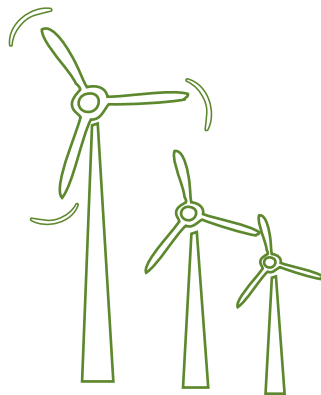
ECO? Logical!



The roots of our green production facility are in Belgium, which manufactures all our luxury vinyl floors in an ecologically responsible way.

Production with green energy

Our factory in Avelgem is equipped with three wind turbines that fulfil the strictest health and safety standards for noise and visual pollution. The turbines can generate up to 13.3 Gwh/year and provide for a third of the Avelgem IVC factory's energy needs.



Strict raw materials checks

Moduleo® consciously opts for production processes that meet the international standards. All suppliers must comply with REACH.

Up to 50% recycled material

Moduleo® floors contain up to 50% certified recycled material. Post-industrial recycling also enables us to obtain an especially 'pure' type of PVC with a very limited impact on the environment.



Made in Belgium

All Moduleo® designer floors are made in Belgium. Because our production is located as close as possible to our customers, we cut out polluting long-distance transport. That is a conscious decision, because we want to minimise our carbon emissions and ecological footprint.



Water-based inks and PU top layer

We only use environmentally friendly water-based inks and PU top layer for all printing processes.

Limited waste, extensive recycling

Moduleo® is always looking for new ways to package products, limit waste and maximise recycling.





The heart of your home



23 Royal Scot Road
Pride Park
Derby DE24 8AJ
Tel: +44 1332 8515 00
Fax: +44 1322 8515 01

Get more inspiration and
information at
www.moduleo.com

